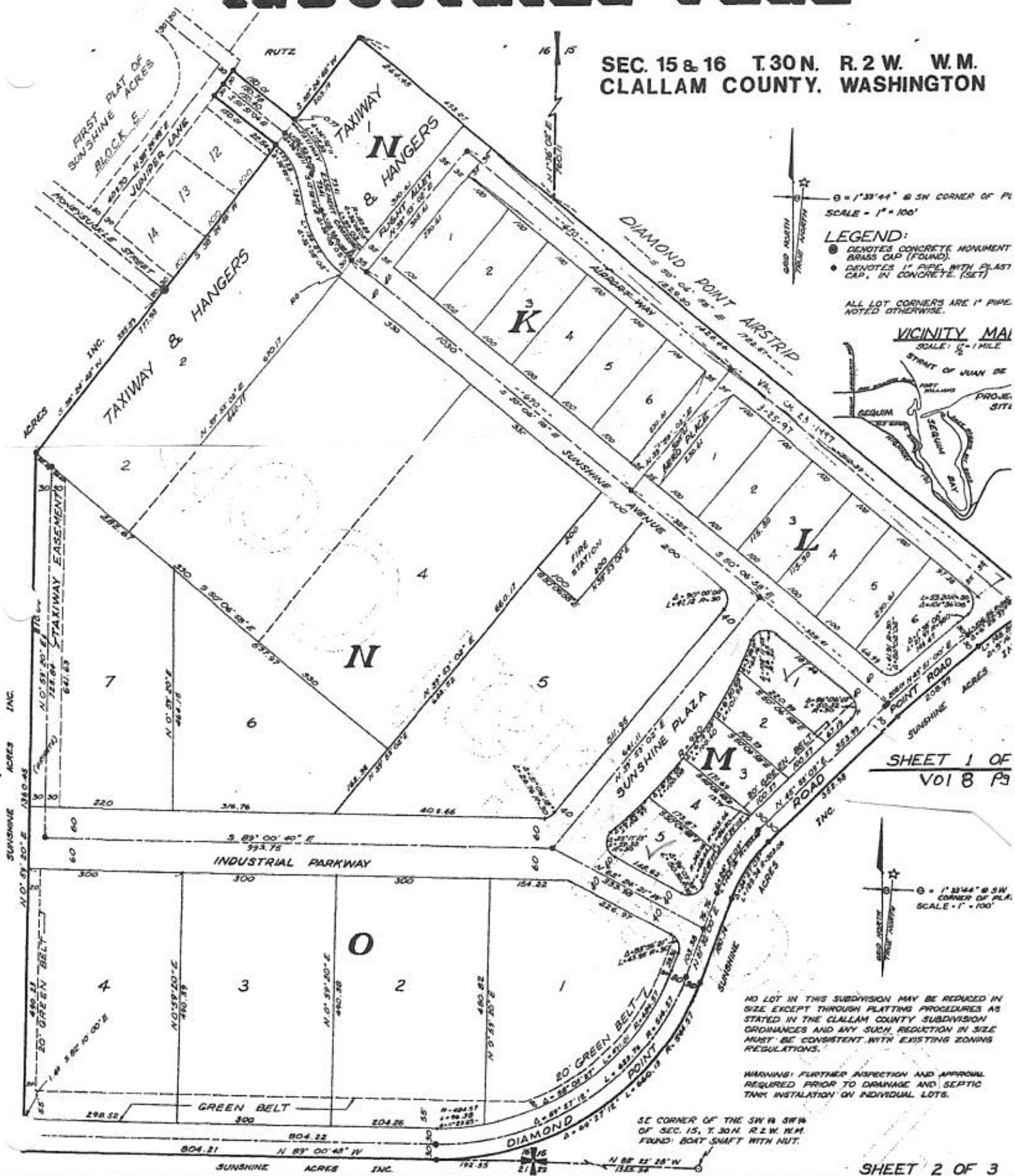


# SUNSHINE ACRES INDUSTRIAL PARK

SEC. 15 & 16 T.30 N. R.2 W. W.M. CLALLAM COUNTY, WASHINGTON



$\theta = 1'33''44''$  @ SW CORNER OF PL.  
 SCALE = 1" = 100'  
**LEGEND:**  
 ● DENOTES CONCRETE MONUMENT BRASS CAP (FOUND).  
 ○ DENOTES 1" PIPE WITH PLASTIC CAP, IN CONCRETE. (SET)  
 ALL LOT CORNERS ARE 1" PIPE NOTED OTHERWISE.



SHEET 1 OF VOL 8 P 5

$\theta = 1'33''44''$  @ SW CORNER OF PL.  
 SCALE = 1" = 100'

NO LOT IN THIS SUBDIVISION MAY BE REDUCED IN SIZE EXCEPT THROUGH PLATTING PROCEDURES AS STATED IN THE CLALLAM COUNTY SUBDIVISION ORDINANCES AND ANY SUCH REDUCTION IN SIZE MUST BE CONSISTENT WITH EXISTING ZONING REGULATIONS.

WARNING: FURTHER INSPECTION AND APPROVAL REQUIRED PRIOR TO DRAINAGE AND SEPTIC TANK INSTALLATION ON INDIVIDUAL LOTS.

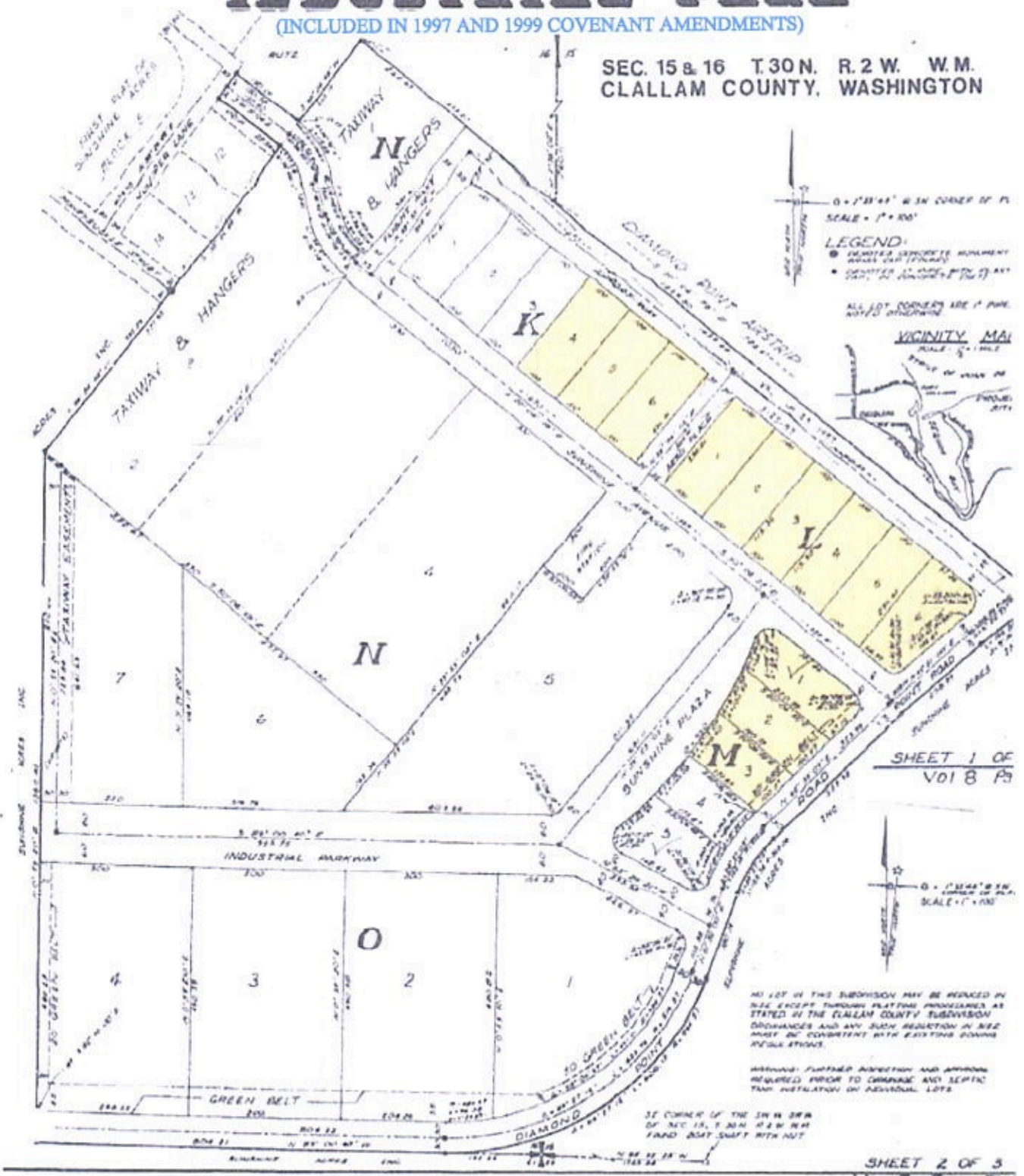
SE CORNER OF THE SW 1/4 SW 1/4 OF SEC. 15, T.30 N. R.2 W. W.M. FOUND: BOAT SHAFT WITH NUT.

SHEET 2 OF 3  
VOL 8 PAGE 37

# SUNSHINE ACRES INDUSTRIAL PARK

(INCLUDED IN 1997 AND 1999 COVENANT AMENDMENTS)

SEC. 15 & 16 T.30N. R.2 W. W.M.  
CLALLAM COUNTY, WASHINGTON



SHEET 1 OF  
VOL 8 PS

SHEET 2 OF 3  
VOL 8 PAGE 37

NO LOT IN THIS SUBDIVISION MAY BE REDUCED IN SIZE EXCEPT THROUGH PLATTING PROCEDURES AS STATED IN THE CLALLAM COUNTY SUBDIVISION ORDINANCES AND ANY SUCH REDUCTION IN SIZE MUST BE CONSISTENT WITH EXISTING ZONING REGULATIONS.

WARNING: FURTHER SURVECTION AND APPROVAL REQUIRED PRIOR TO CHANGING ANY SEPTIC TANK INSTALLATION ON INDIVIDUAL LOTS.

SE CORNER OF THE 3/4" IN DIA OF SEC 15, T.30N. R.2W. W.M. FOUND 2007 SHOWN WITH NUT